

National Park Service
U.S. Department of the Interior
Bering Land Bridge National Preserve
Alaska

**Bering Land Bridge National Preserve
Guided Sport Hunting Concessions
Environmental Assessment
November 2012**



Figure 1. Bering Land Bridge National Preserve and Vicinity with Game Management Subunits

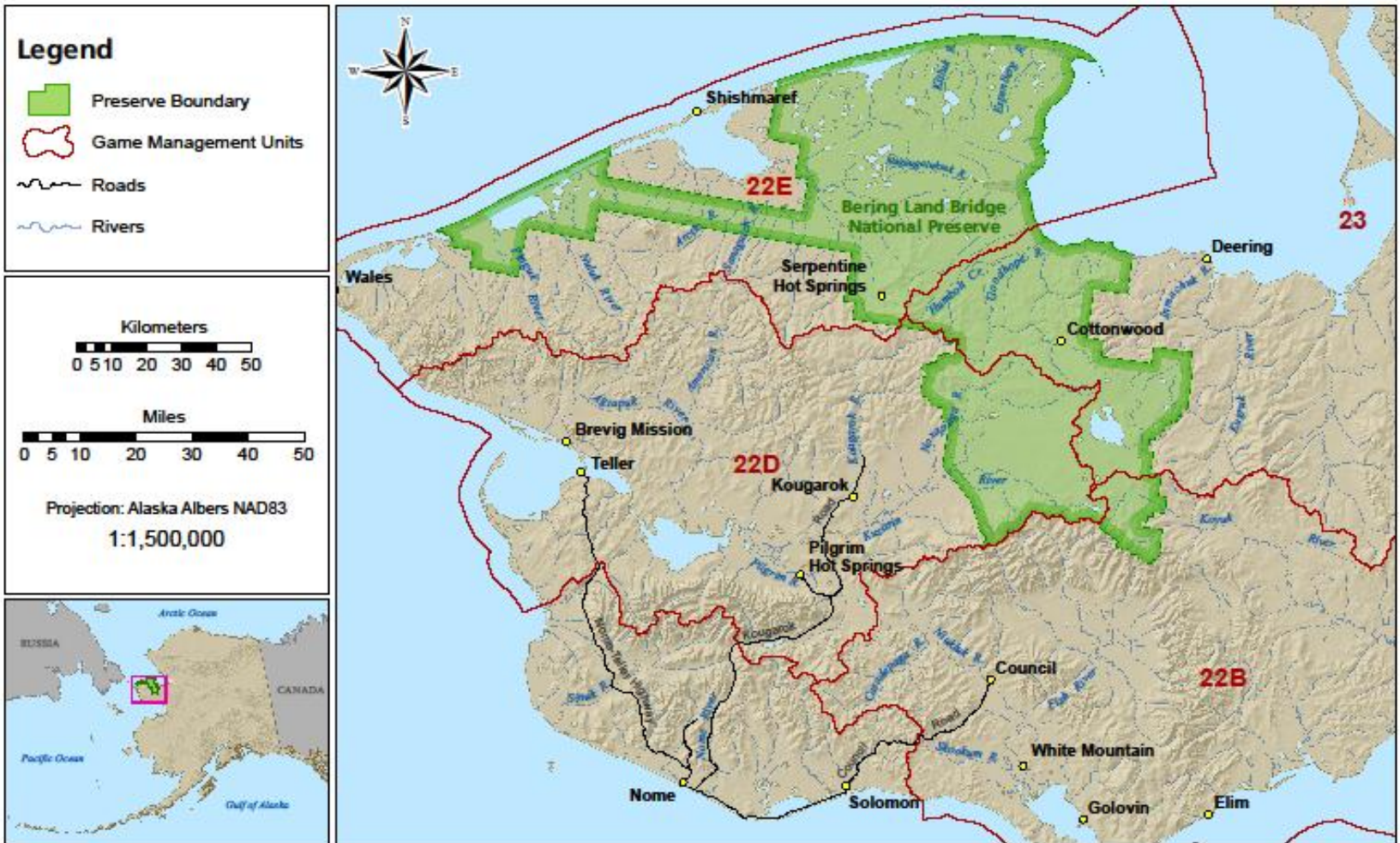


Figure 2.2. Guide Use Areas for All Guides in Alternative B

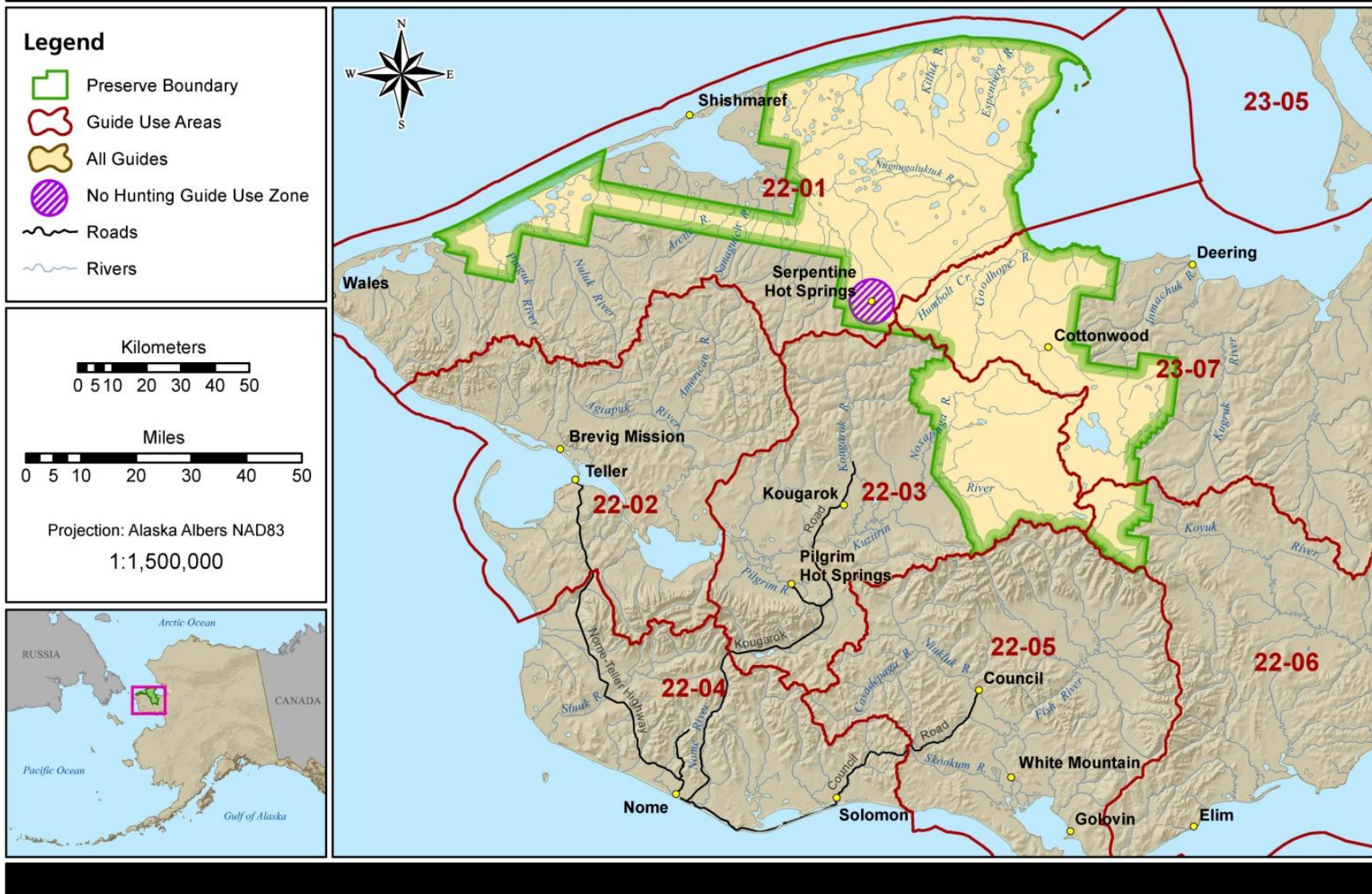


Figure 2.3. No Hunting Guide Use Zone for Alternative B

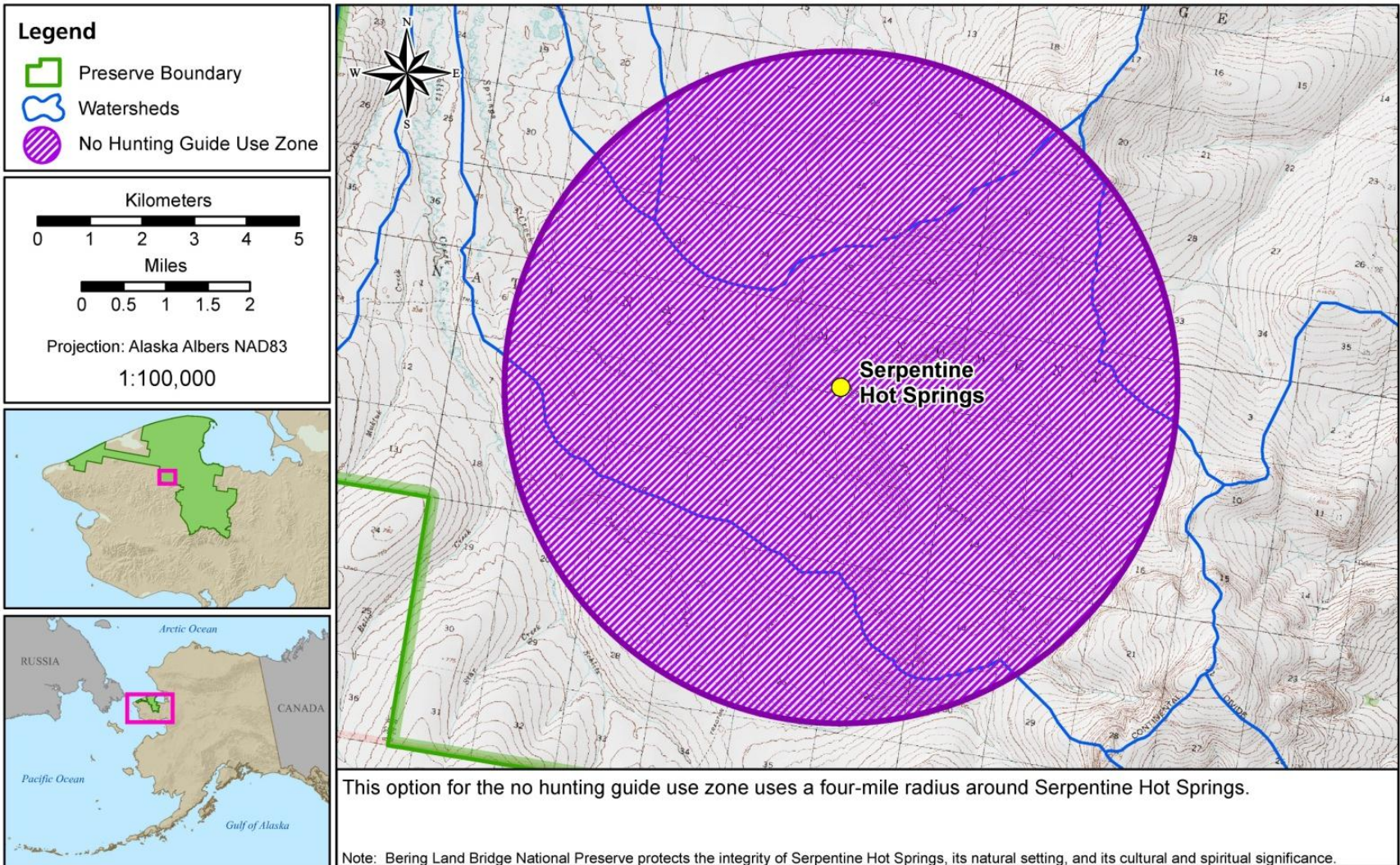


Figure 2.4. Example of Separate Guide Use Areas for 3 Guides

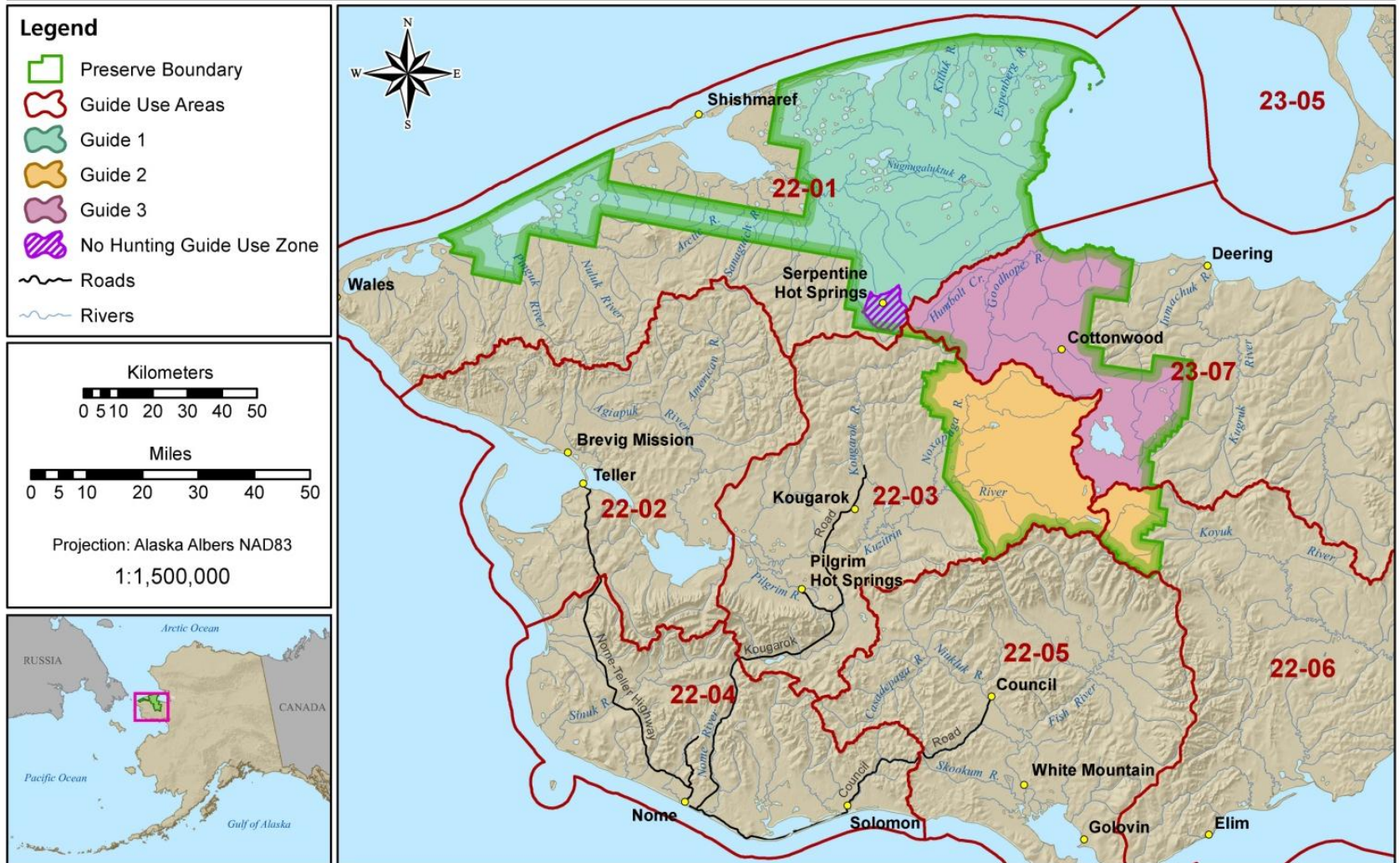


Figure 2.5. No Hunting Guide Use Zone for Alternative C

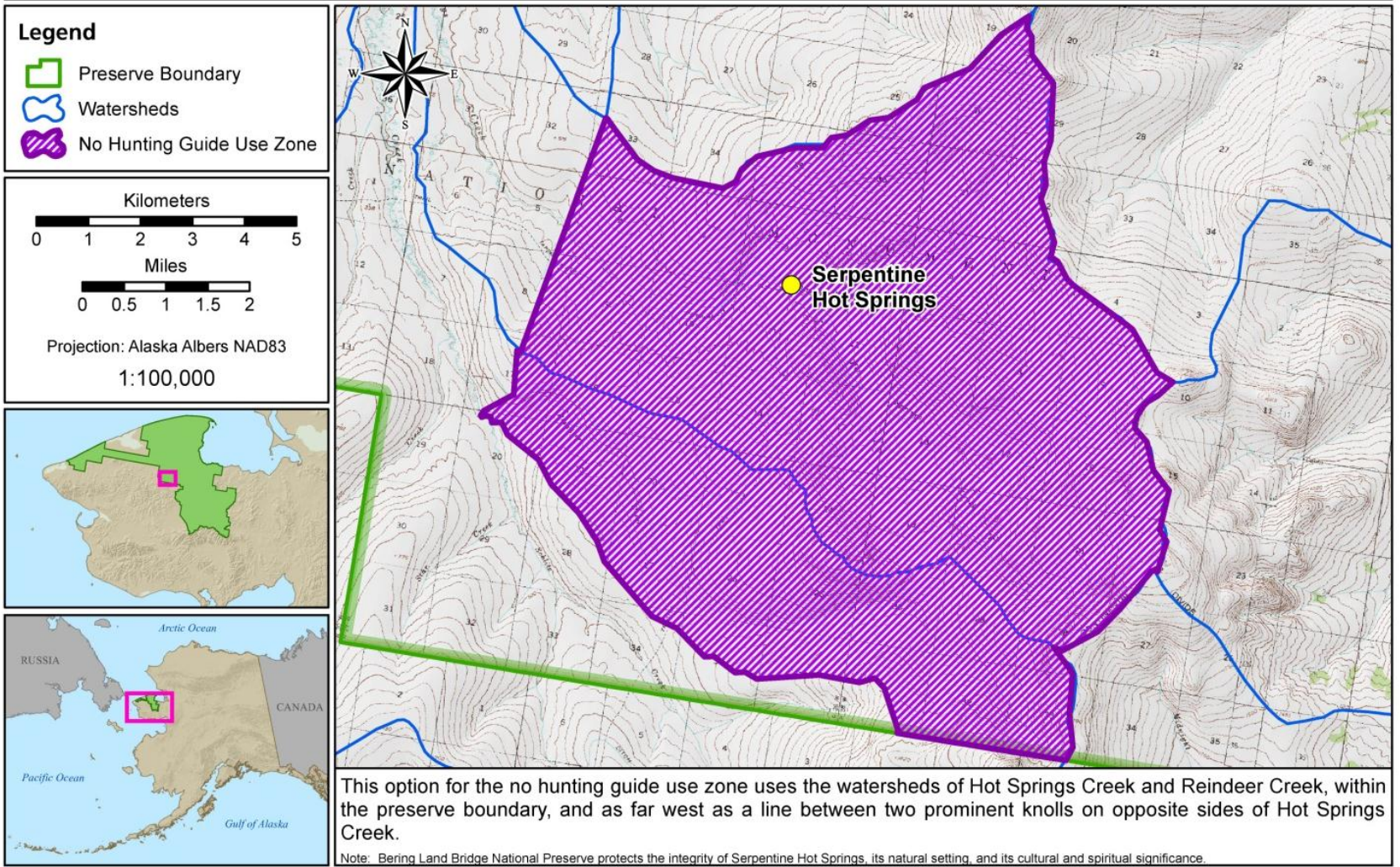


Table 2.1. Summary of Alternatives

	Attributes
<p>Alternative A – No Hunting Guide Concessions Awarded (No Action)</p>	<p>Subsistence and sport hunting continues as in past. Sport hunting access continues with private transportation or with licensed air taxi operators and big game transporters.</p>
<p>Alternative B – Award Up to 3 Hunting Guide Concessions for the Whole Preserve</p>	<p>Each hunting guide concession limited to an average of 10 clients per year and no more than 14 clients in any one year with a maximum of 100 to 300^a clients over the 10-year contract period.</p> <p>A four-mile radius of area of 50.25 mi² (32,150 acres) around the Serpentine Hot Springs bathhouse closed to guided hunting operations.</p>
<p>Alternative C – NPS <i>Preferred</i> Award Up to 3 Hunting Guide Concessions for Separate Guide Areas in the Preserve</p>	<p>Client limits at 10 per year for GUA 22-01 and a total of 10 clients per year for the remaining GUAs (22-03, 22-06 and 23-07) for a maximum of up to 200^b clients in 10 years.</p> <p>About 44 mi² (28,150 acres) around the Serpentine Hot Springs bathhouse encompassing the upper reaches of Hot Springs Creek and Reindeer Creek watersheds to be closed to guided hunting operations.</p>

a) Depends on whether 1, 2 or 3 guides are authorized.

b) Regardless of whether 1, 2, or 3 guides are authorized because the number of clients are assigned to an area, not the number of guides.

Table 2.2. Summary Impacts

Alt. A – No Action	Alt. B – Guides with Overlapping Guiding Areas	Alt. C – Guides with Separate Guiding Areas (<i>NPS Preferred</i>)
Local Employment		
No effect.	A few guide and assistant guide jobs with effects negligible but perceptible, of low intensity, potentially long-term, and important but rare in the region.	Same as Alternative B.
Recreation Use		
No effect.	Moderate effect from up to 30 hunters added annually in sparsely used area. Effects long-term, medium intensity, and affect an important activity.	Similar to Alternative B because up to 20 hunters added annually in area.
Cultural Resources		
No effect.	Potential disturbance to archeological and historical resources moderate because of uniqueness of these resources in area and low intensity, but long-term effects.	Same as Alternative B.
Subsistence		
No new effects.	Minor effect for subsistence hunting for muskoxen, brown bears, and caribou, but larger effect on subsistence moose hunters due to competition for moose near Deering and Shishmaref.	Similar to Alternative B, but due to dispersal of guides and clients across units could minimize conflicts near subsistence communities.
Wildlife		
No new impacts on wildlife.	Effect on wildlife varies by species. Effects would be minor for muskoxen and caribou, and moderate for moose and brown bears.	Similar to Alternative B, but with fewer and more dispersed guided hunters.

Comment period: November 12, 2012 to December 12, 2012.

Written comments to Bud Rice, NPS Alaska Regional Office,
240 West 5th Avenue, Anchorage, AK 99501,

Or to the NPS project website where EA and cover letter are
also available at:

<https://pepc.nps.gov/projectHome.cfm?projectId=38051>

If you have specific questions about the EA or the comment
process, contact:

Bud Rice at (907) 644-3530, or

Superintendent Jeanette Pomrenke at (907) 443-6101.